

# 800 SERIES DISABLED PERSONS TOILET ALARM KITS

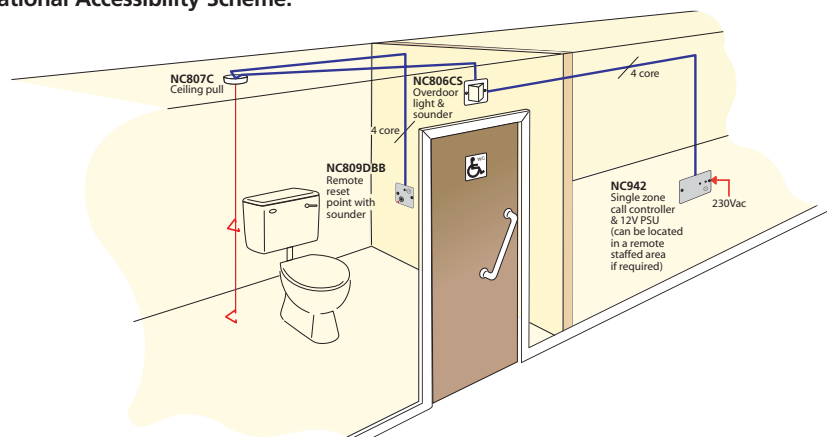
Our new-look disabled persons toilet alarm kits include everything required for a BS8300 clause compliant emergency assistance alarm (except cables & fixings).

Attractively designed and simple to use, they allow a distressed person to raise an alarm in the event of an emergency.

To operate, the user simply pulls the cord of a ceiling pull unit to activate a light and sounder outside the WC.



- Tried, trusted and respected
- NC951 Standard and NC951B Elite versions available
- Attractive compact design blends perfectly into any sort of decor
- New-look double gang call controller features a volt-free relay output, a rotary volume control, Braille text and (if the NC951B Elite kit is purchased) an on-board rechargeable battery backup facility
- Remote reset point c/w sounder provides audible and visual indication of an alarm call inside the WC to help reassure users that help is on the way
- Simple to install 12V system - four core stranded security cable is ideal for most installations
- Ceiling pull features two open sided triangular bangles for ease of use by the infirm
- Disabled WC sticker included in all kits
- All wall-mounting plastic accessories fit 25mm backboxes. Ceiling pull is surface mountable
- Optional rechargeable battery back-up facility (on NC951B Elite Kits only) provides up to 24 hours stand-by and 15 minutes alarm running time
- System can be easily expanded to include up to three additional 800 Series Call System devices
- Can be used to help building managers and service providers comply with BS8300, the Disability Discrimination Act, the Care Standards Act and the English Tourism Council's National Accessibility Scheme.



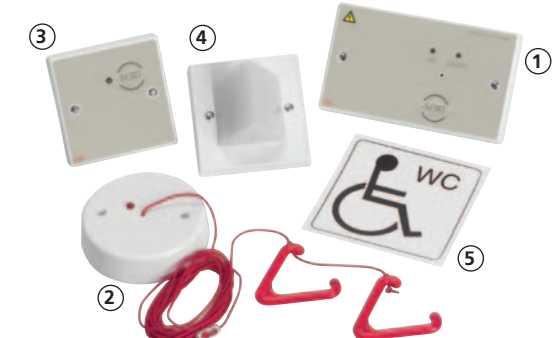
FIR/G/10006

SP203 APPROVED



The installation of a disabled persons/accessible toilet alarm is recommended for many shops, leisure centres, hotels, museums, churches, theatres and other public buildings by the Disability Discrimination Act, the Care Standards Act, BS8300 and the English Tourism Council's National Accessibility Scheme. Specified by a host of local authorities, The NC951 range offers a reliable and cost-effective solution to calling for assistance in the event of an emergency.

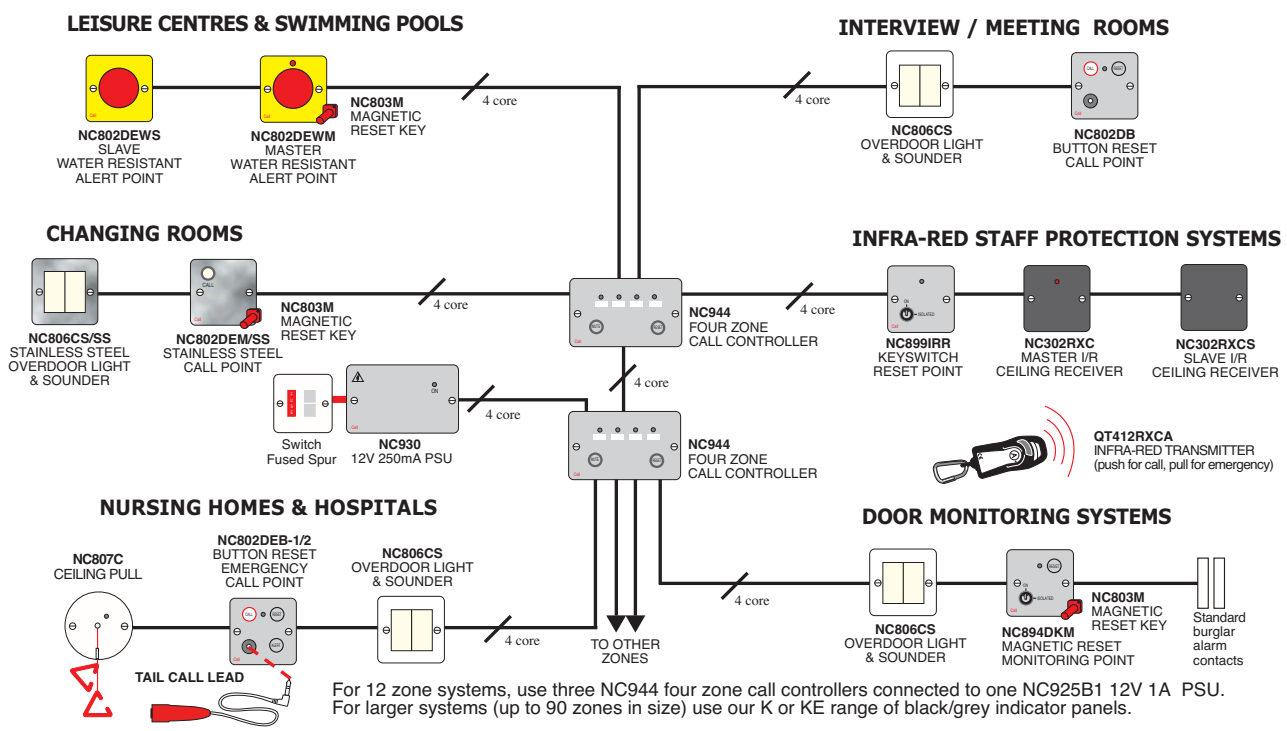
### NC951 & NC951B DISABLED PERSONS TOILET ALARM KIT CONTENT AND DEVICE DESCRIPTIONS



- ① **NC942 Single Zone Call Controller c/w 12V PSU**  
Used to provide power to the system, the NC942 call controller features a volume adjustable buzzer, a zonal alarm LED (to provide audible and visual indication of a call), a mute/reset button (for silencing or cancelling calls) and a volt-free relay with normally open, closed and common contacts rated at 30Vd.c. @ 1A (to switch optional externally powered devices such as sounders, strobes or the extra low voltage coils of mains controlling relays). The controller's label also includes Braille text for the benefit of visually impaired members of staff. Mounts on a 25mm UK double gang back box.
- ① **NC942B Single Call Controller c/w 12V PSU and backup**  
Included in NC951B Elite kits only (instead of the NC942 call controller), the NC942B includes all of the NC942's features plus an additional 500mAh rechargeable battery backup facility. When enabled, the controller's battery will continue to power the system for approximately 24 hours (standby) plus 15 minutes (alarm running time) in the event of a mains failure.

- ② **NC807C Ceiling Pull Unit**  
Used to generate a call on the system, the NC807C incorporates a red confidence light to reassure the user that a call has been made, a 3m cord and two red triangular pull bangles specially designed for ease of use by the infirm. Please note, for applications requiring more than one point of call (i.e. at the WC & the wash basin), up to three ceiling pulls can be daisy-chained together. Surface mountable.
- ③ **NC809DBB Reset Point c/w Sounder**  
Designed for use alongside the WC, the NC809DBB allows calls generated by the ceiling pull to be cancelled at source, i.e. inside the WC. It also features an on-board reassurance LED and sounder (to provide audible and visual indication of an alarm call inside the WC and to help reassure users that help is on its way). Like the call controller, its label includes Braille text for ease of use by the visually impaired. Mounts on a 25mm UK single gang back box.
- ④ **NC806CS Overdoor Light c/w Sounder**  
Used to provide additional audible and visual indication of an alarm call outside the WC, the NC806CS features a series of ultra-bright LEDs in a triangular shaped diffuser making it highly visible from a distance. Usually located directly outside the WC above the door. Mounts on a 25mm UK single gang back box
- ⑤ **NC949 Disabled WC Sticker**  
A gloss finished, permanent vinyl sticker featuring the universally recognisable Disabled WC symbol.  
  
The compatibility of all the above devices with our entire range of 800 Series call system components (including four zone call controllers) facilitates straightforward system expansion and allows the system to be easily adapted for other applications. Refer to the diagram below for further details.

### EXAMPLE WIRING CONFIGURATIONS & TYPICAL APPLICATIONS FOR OTHER 800 SERIES DEVICES



### Also available: The PDA RANGE of induction loop systems for the hard of hearing

Available in a variety of cost-effective kit formats our wide range of audio-frequency induction loop systems for the hard of hearing can be used to help building managers and service providers comply with the requirements of BS8300, the Disability Discrimination Act, the Care Standards Act and the National Tourism Council's National Accessibility Scheme.

